

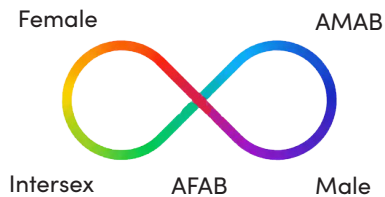
THE GENDERBREAD PERSON

This is a friendly infographic that visually represents four components of human identity. The terms associated with each category are ever evolving. Here are just a few:



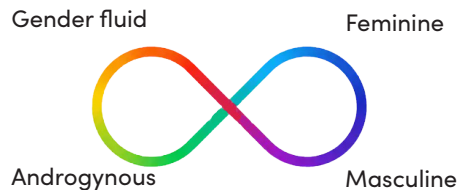
ASSIGNED SEX

The biological classification of a person as female, male or intersex. It is usually assigned at birth based on a visual assessment of external anatomy.



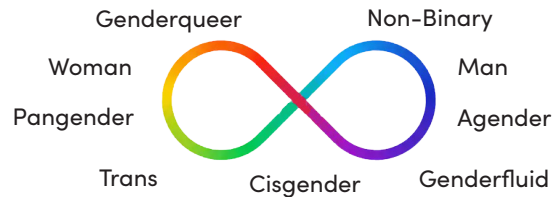
GENDER EXPRESSION

The way gender is presented and communicated to the world through clothing, speech, body language, hairstyle, voice and/or the emphasis or de-emphasis of body characteristics and behaviours.



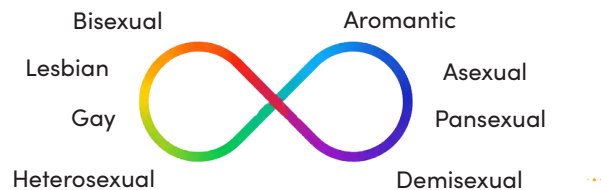
GENDER IDENTITY

A person's internal and individual experience of gender. It is not necessarily visible to others and it may or may not align with what society expects based on assigned sex.



ATTRACTION

Often referred to as a sexual orientation, attraction describes a person's potential for emotional, spiritual, intellectual, intimate, romantic and/or sexual interest in other people and may form the basis for aspects of one's identity and/or behaviour.



UMBRELLA TERMS

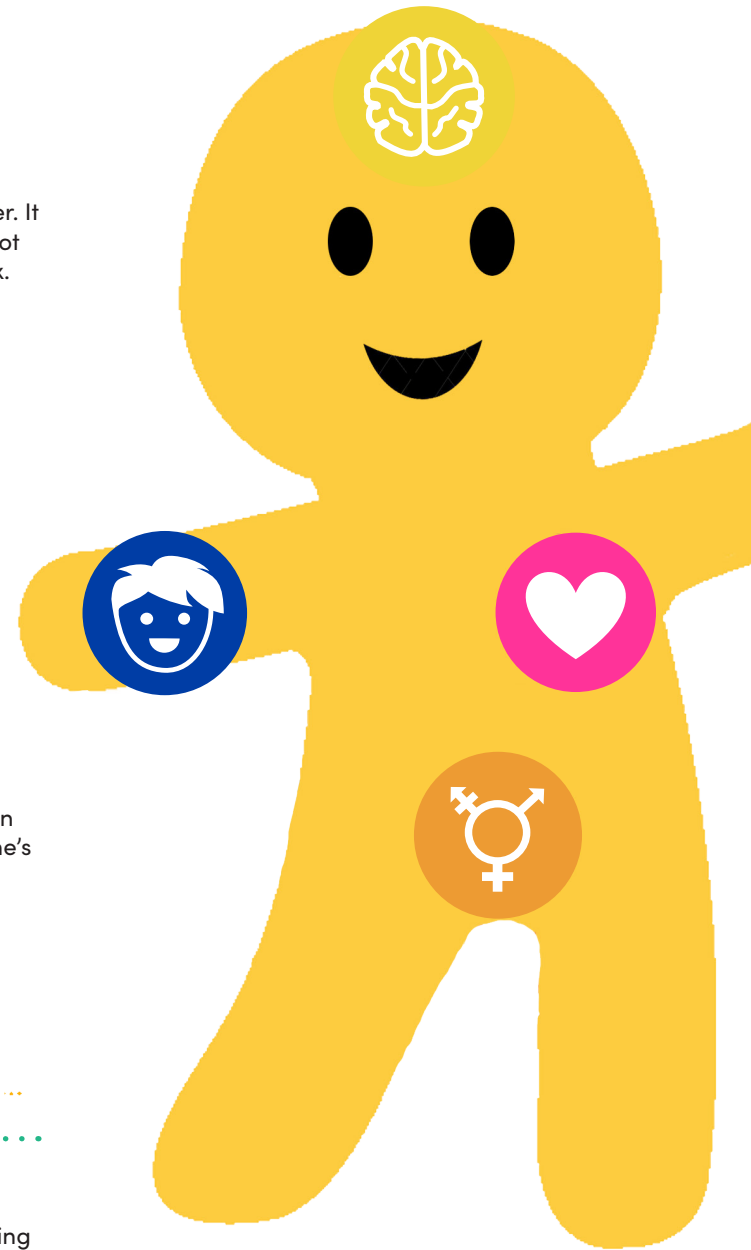
Many terms related to LGBTQI2S identities fall into more than one category.

Two Spirit



Queer

Questioning



LGBTQI2S GLOSSARY OF TERMS



<p>AGENDER A person who identifies as either having no gender or a neutral gender identity.</p>	<p>DYADIC A person whose chromosomal, hormonal, or anatomical sex characteristics fall within the conventional classifications of male or female.</p>	<p>HETEROSEXUAL A person who experiences attraction to people of a different gender. Also referred to as “straight”.</p>	<p>QUEER This term has been reclaimed by some LGBTQI2S communities as a term of pride and affirmation of diversity. It can be used to encompass a broad spectrum of identities related to sex, gender, and attraction or by an individual to reflect the interrelatedness of these aspects of their identity.</p>
<p>ASEXUAL A person who does not experience sexual attraction, or who has little to no interest in sexual activity.</p>	<p>GENDERQUEER A person whose gender identity and/or expression may not correspond with social and cultural gender expectations. Individuals who identify as genderqueer may move between genders, identify with multiple genders, or reject the gender binary or gender altogether,</p>	<p>TWO SPIRIT (2S) An English umbrella term to reflect and restore Indigenous traditions forcefully suppressed by colonization, honouring the fluid and diverse nature of gender and attraction and its connection to community and spirituality. It is used by some Indigenous People rather than, or in addition to identifying as LGBTQ/</p>	<p>QUESTIONING An umbrella term for the process of reconciling: 1) All the feelings you have within yourself about how you experience your attraction and/or gender, 2) The language you have available to you to describe those feelings, and 3) Your sense of how this will impact your interactions with others in your social context.</p>
<p>ANDROGYNOUS A word to describe a behaviour, trait, or style of expression that either blends both masculine and feminine forms of expression, or is culturally read as gender-neutral.</p>	<p>GAY A person who experiences attraction to people of the same gender as themselves. Gay may be used by individuals of a diversity of genders, or may refer specifically to men who are attracted to other men.</p>	<p>LESBIAN A person who identifies as a woman and experiences attraction to people of the same gender.</p>	<p>FEMININE A word to describe a behaviour, trait, or style of expression that has cultural associations with ‘being a woman’. These associations change over time, between cultures, and from person to person.</p>
<p>BISEXUAL A person who experiences attraction to both people of their own gender and people of gender different from their own.</p>	<p>GENDERFLUID A person whose gender identity is experience as being on a spectrum that varies over time.</p>	<p>MASCULINE A word to describe a behaviour, trait, or style of expression that has cultural associations with ‘being a man’. These associations change over time, between cultures, and from person to person.</p>	<p>TRANS A person whose gender identity does not correspond with what is socially expected based on their sex assigned at birth. It can be used as an umbrella term to refer to a range of gender identities and experiences.</p>
<p>CISGENDER A person whose gender identity corresponds with what is socially expected based on their sex assigned at birth (e.g. a person who was assigned male at birth and identifies as a man).</p>	<p>INTERSEX A person whose chromosomal, hormonal, or anatomical sex characteristics fall outside of the conventional classifications of male or female.</p>	<p>PANSEXUAL A person who experiences attraction regardless of gender.</p>	<p>DEMISEXUAL A person who experiences sexual attraction to someone only after having an emotional attraction to them.</p>